

APPENDIX A

GETTING THE PERMITS

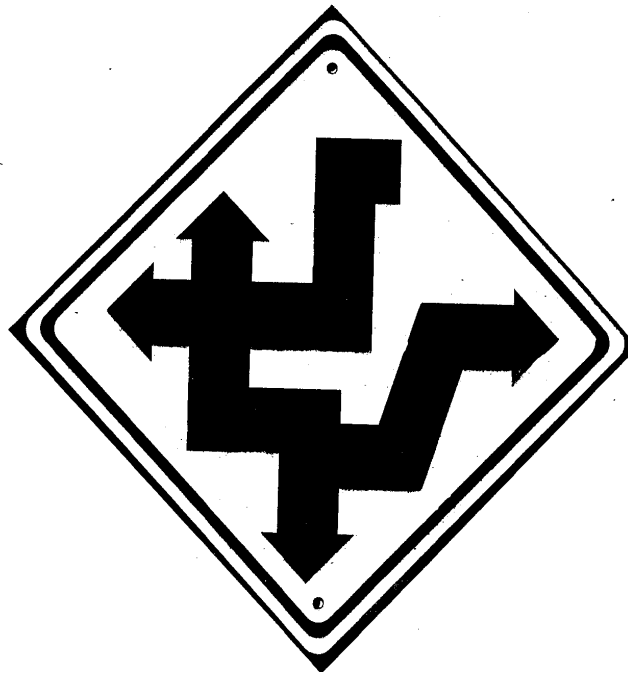
This appendix provides more detail to the information provided in Chapter 2 – Following the Rules. The intent is for the two sections to complement one another. Both should be consulted during the permit process for road maintenance activities.

A-1

Permit Flow Charts

A-2

Directory of Agencies



A-1 PERMIT FLOW CHARTS

Permit flow charts provide an overview of how the permit process usually works. (Of course, there are always exceptions to the rules.)

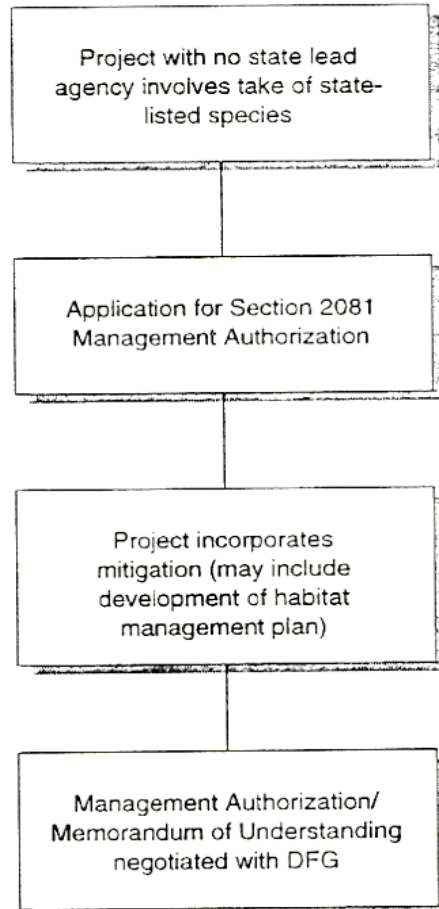
<u>“Permit” Name</u> <i>In alphabetical order</i>	<u>Responsible Agency</u>
1. California Endangered Species Act – CESA <ul style="list-style-type: none">• Section 2081	DFG
2. California Environmental Quality Act – CEQA	Lead Agency
3. Clean Water Act – CWA Section 401	RWQCB
4. CWA Section 402 – Stormwater Permit	SWRCB & RWQCB
5. CWA Section 404 <ul style="list-style-type: none">• Individual Permit Process• Nationwide Permit Process	USACE
6. Federal Endangered Species Act - ESA <ul style="list-style-type: none">• Section 7 Consultation• Section 10 Incidental Take Permit	NMFS – Salmon & Steelhead USFWS – Other species
7. Fish & Game Code Section 1601 Streambed Alteration Agreement	DFG

NOTE: These charts reflect the currently available procedures, which can and do change over time. Please consult the agency for the most recent procedure.

PERMIT FLOW CHARTS

CALIFORNIA ENDANGERED SPECIES ACT SECTION 2081

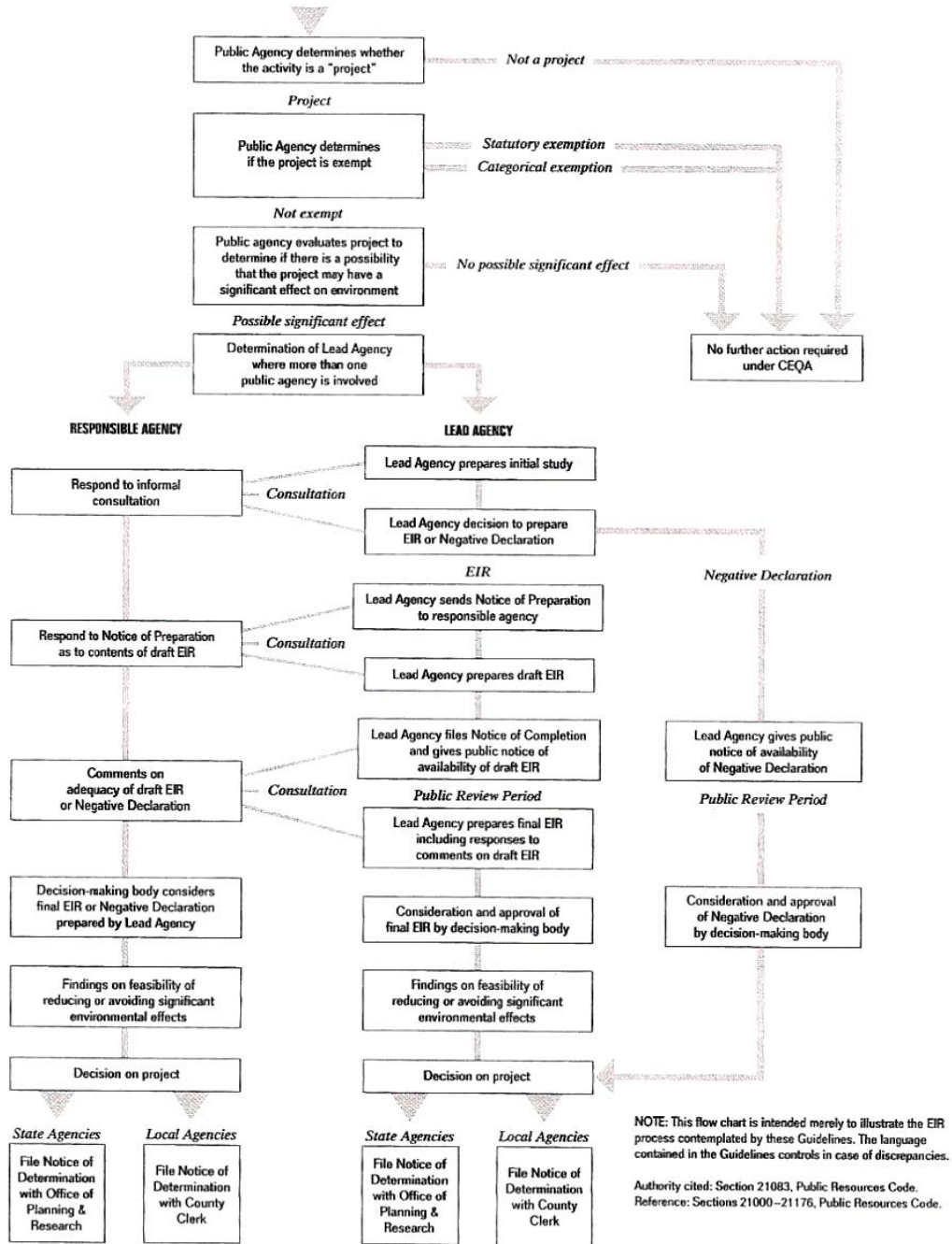
California Dept. of Fish and Game



*Source: USFWS (1997). Handbook of Regulatory Compliance for the Anadromous Fish Restoration Program.
Prepared by Jones & Stokes Assoc., Stockton CA.*

PERMIT FLOW CHARTS

CALIFORNIA ENVIRONMENTAL QUALITY ACT - CEQA

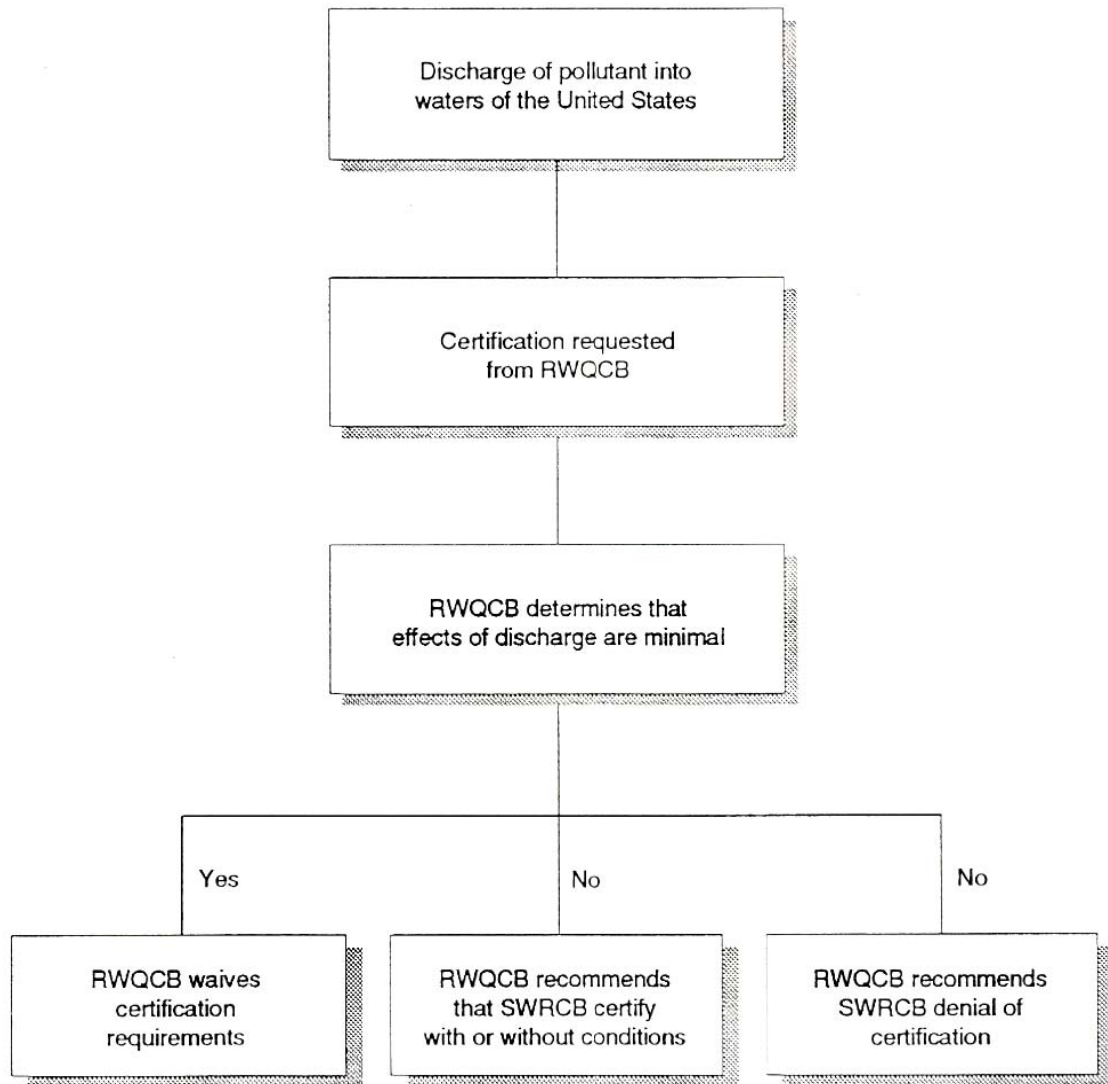


Source: Remy, M.H. et al. (1999). *Guide to the California Environmental Quality Act*. Solano Press Books. Pt. Arena CA. p. 693. Reproduced by permission of the publisher.

PERMIT FLOW CHARTS

CLEAN WATER ACT – SECTION 401 Certification

Regional Water Quality Control Board / State Water Resources Control Board



Source: USFWS (1997). Handbook of Regulatory Compliance for the Anadromous Fish Restoration Program.
Prepared by Jones & Stokes Assoc., Stockton CA.

A-1

PERMIT FLOW CHARTS

CLEAN WATER ACT – SECTION 402 Stormwater Permit

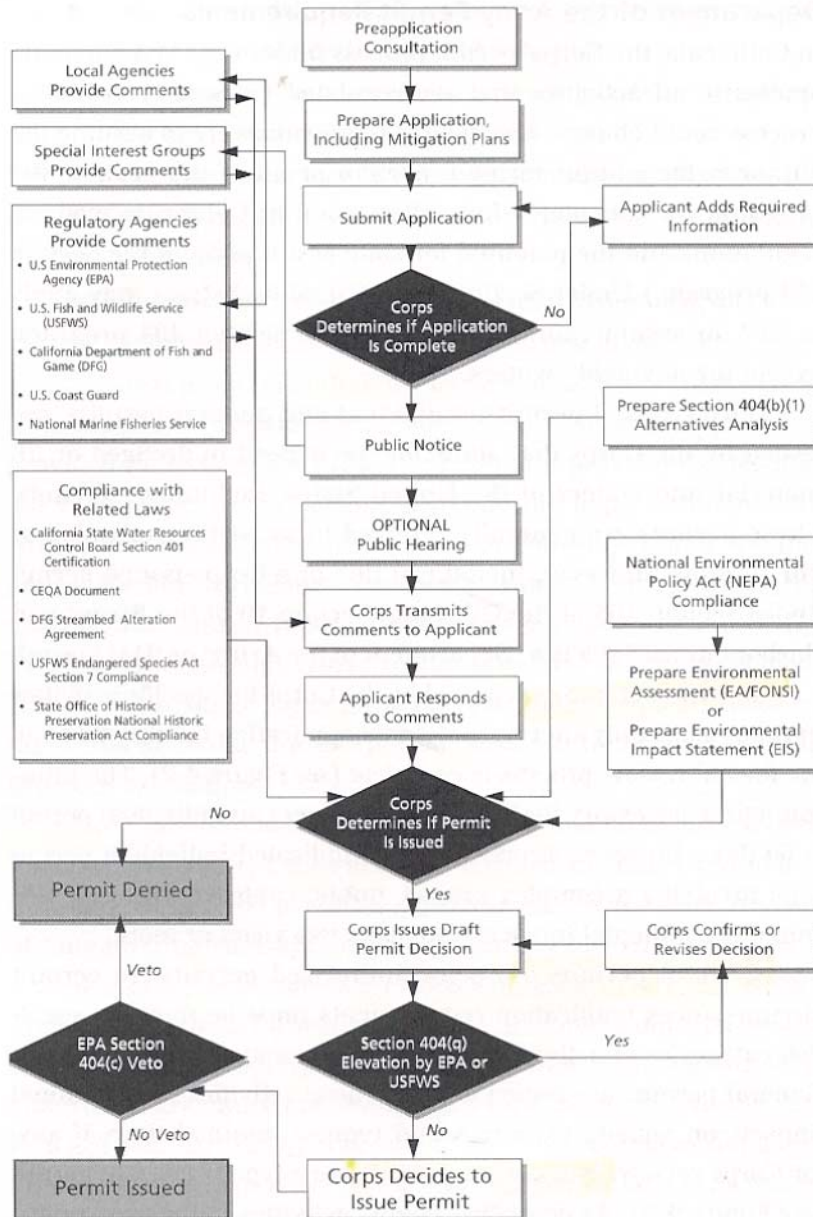
**State Water Resources Control Board /
Regional Water Quality Control Board**

[NO FLOW CHART AVAILABLE]

PERMIT FLOW CHARTS

CLEAN WATER ACT – SECTION 404 – INDIVIDUAL PERMIT PROCESS

U.S Army Corps of Engineers



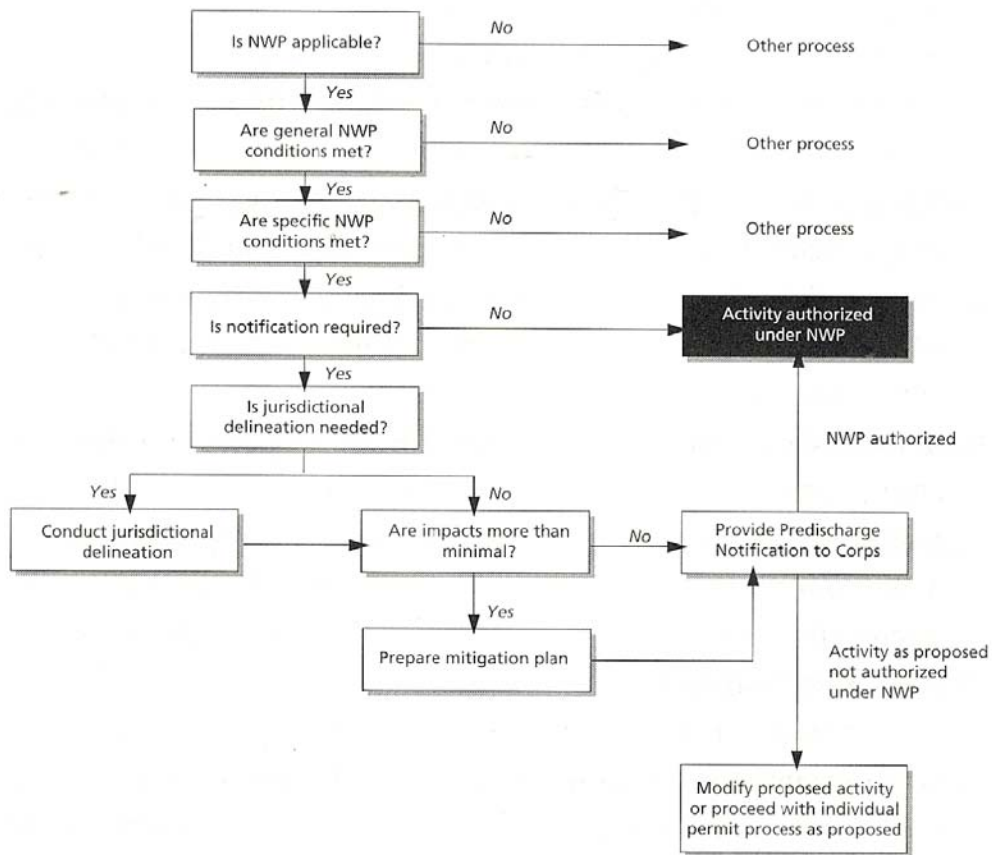
Source: Cylinder, P.D. et al. (1995). *Wetlands Regulation: A Complete Guide to Federal and California Programs*. Solano Press. p. 50. Reproduced by permission of the publisher.

PERMIT FLOW CHARTS

CLEAN WATER ACT – SECTION 404

NATIONWIDE PERMIT PROCESS (NWP)

U.S Army Corps of Engineers

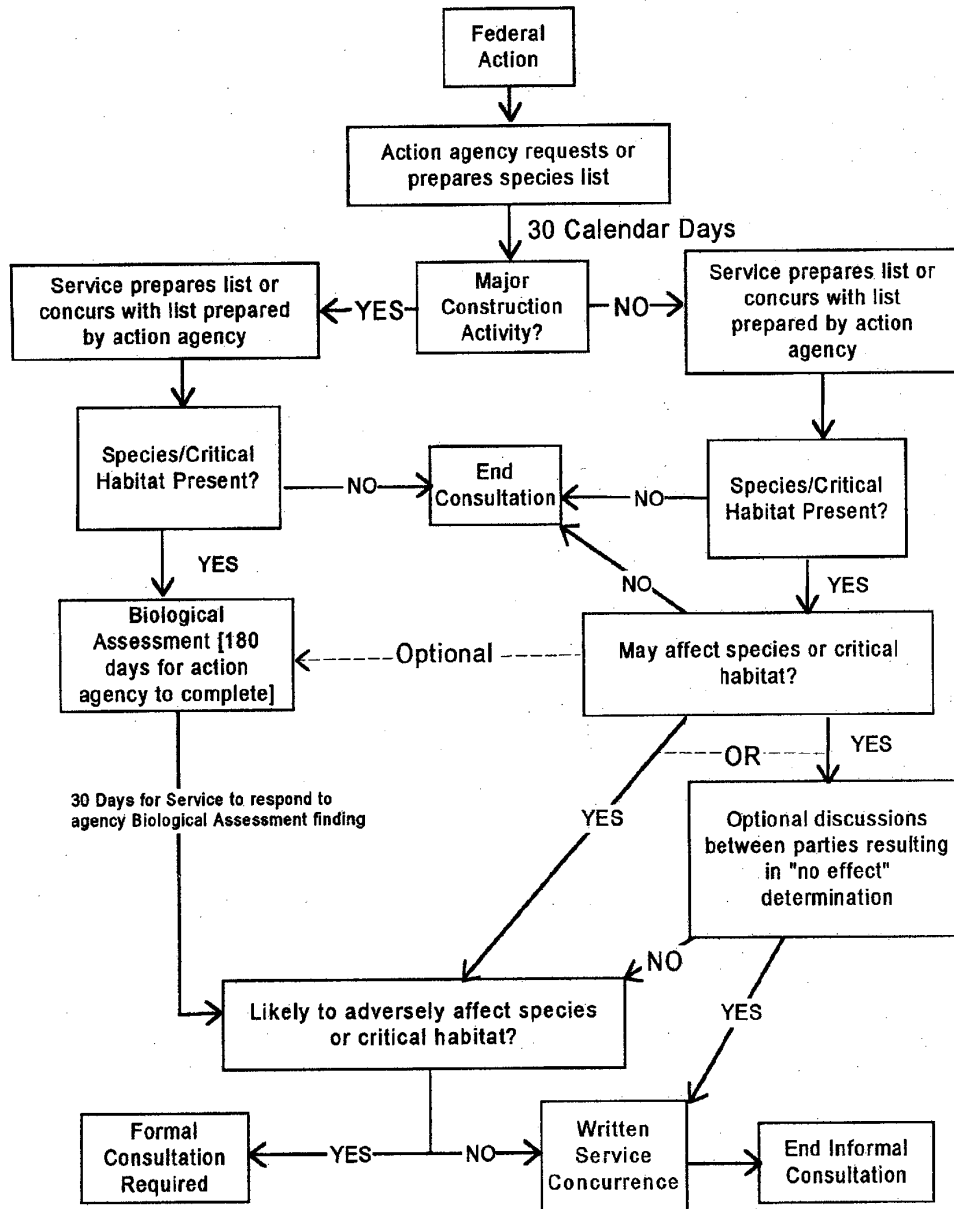


Source: Cylinder, P.D. et al. (1995). *Wetlands Regulation: A Complete Guide to Federal and California Programs*. Solano Press. p. 51. Reproduced by permission of the publisher.

PERMIT FLOW CHARTS

FEDERAL ENDANGERED SPECIES ACT (ESA) SECTION 7 CONSULTATION - INFORMAL

National Marine Fisheries Service / U.S. Fish and Wildlife Service

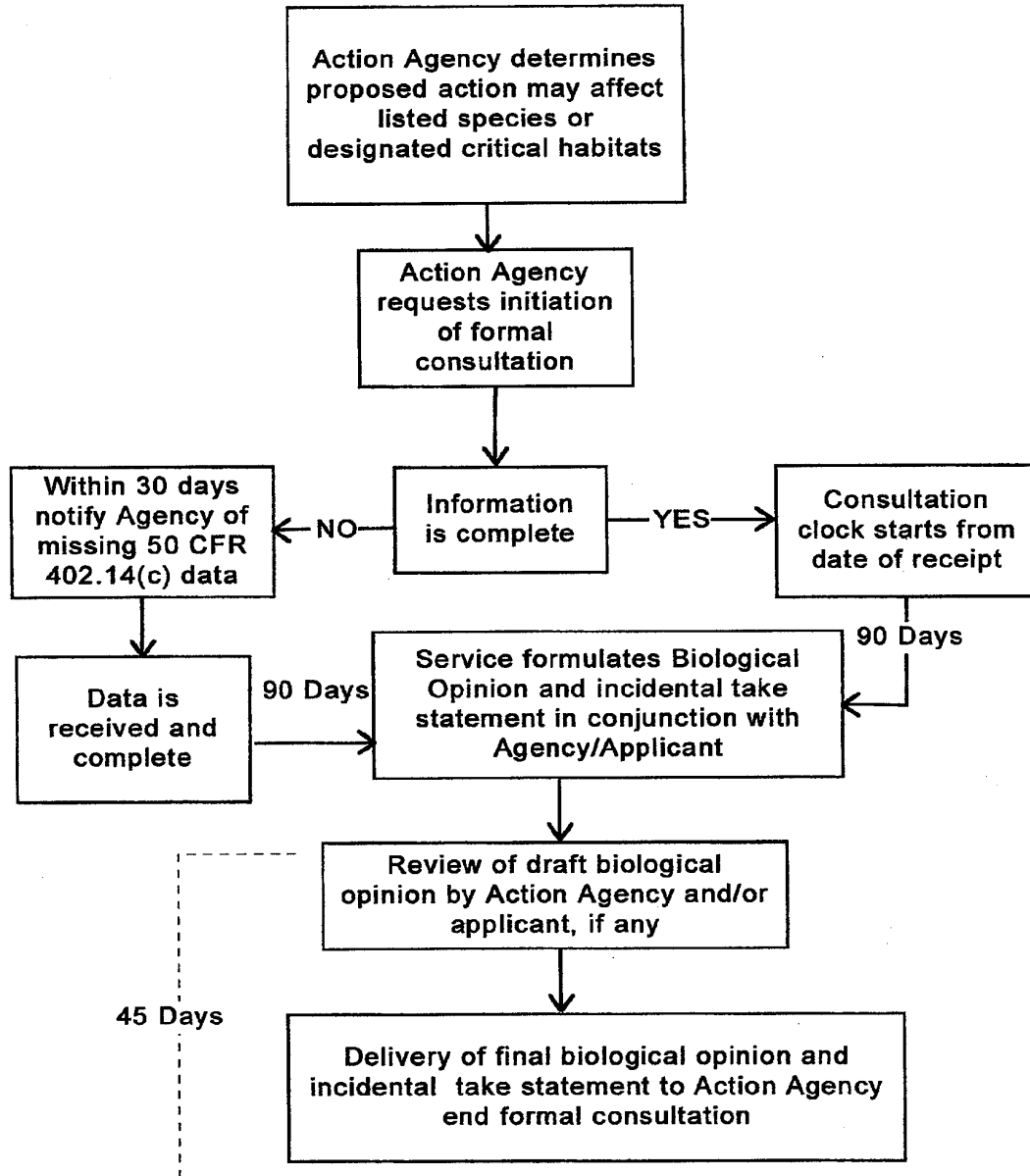


Source: USFWS & NMFS. 1998. *Endangered Species Act Consultation Handbook: Procedures for Conducting Section 7 Consultations and Conferences. Final.*

PERMIT FLOW CHARTS

FEDERAL ENDANGERED SPECIES ACT (ESA) SECTION 7 CONSULTATION - FORMAL

National Marine Fisheries Service / U.S. Fish and Wildlife Service

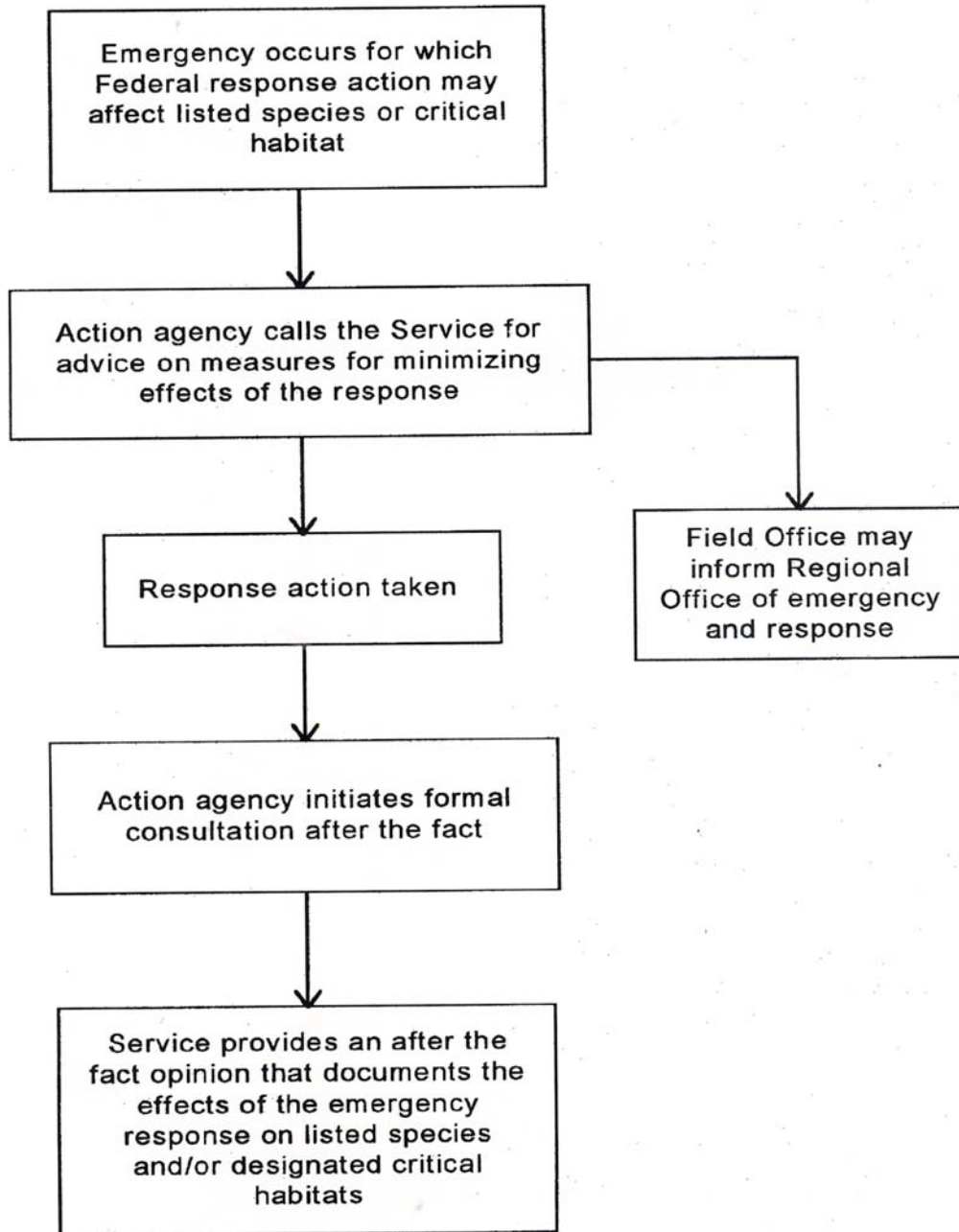


Source: USFWS & NMFS. 1998. *Endangered Species Act Consultation Handbook: Procedures for Conducting Section 7 Consultations and Conferences*. Final.

PERMIT FLOW CHARTS

FEDERAL ENDANGERED SPECIES ACT (ESA) SECTION 7 CONSULTATION - EMERGENCY

National Marine Fisheries Service / U.S. Fish and Wildlife Service

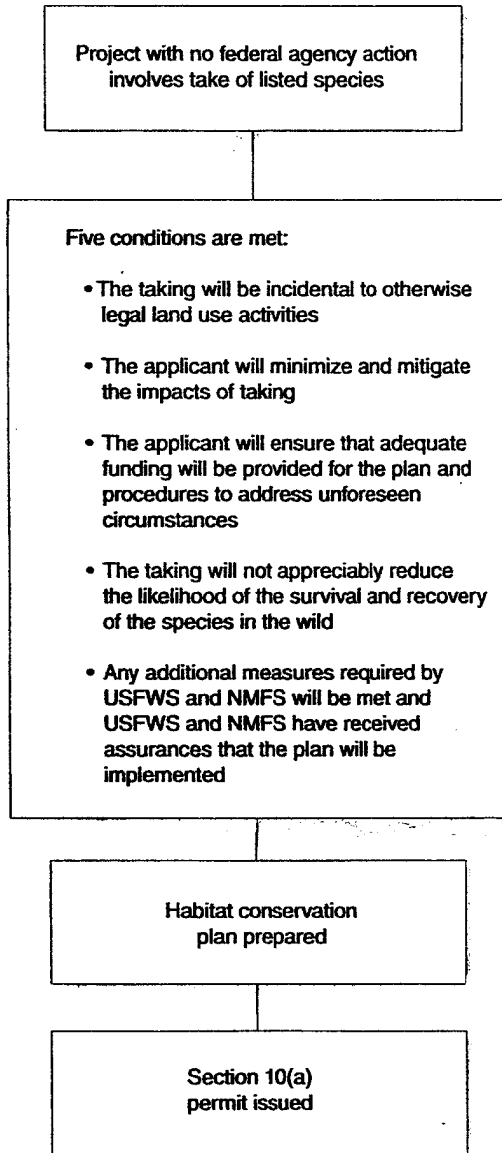


Source: USFWS & NMFS. 1998. *Endangered Species Act Consultation Handbook: Procedures for Conducting Section 7 Consultations and Conferences*. Final.

PERMIT FLOW CHARTS

FEDERAL ENDANGERED SPECIES ACT SECTION 10 TAKE PERMIT

National Marine Fisheries Service / U.S. Fish and Wildlife Service

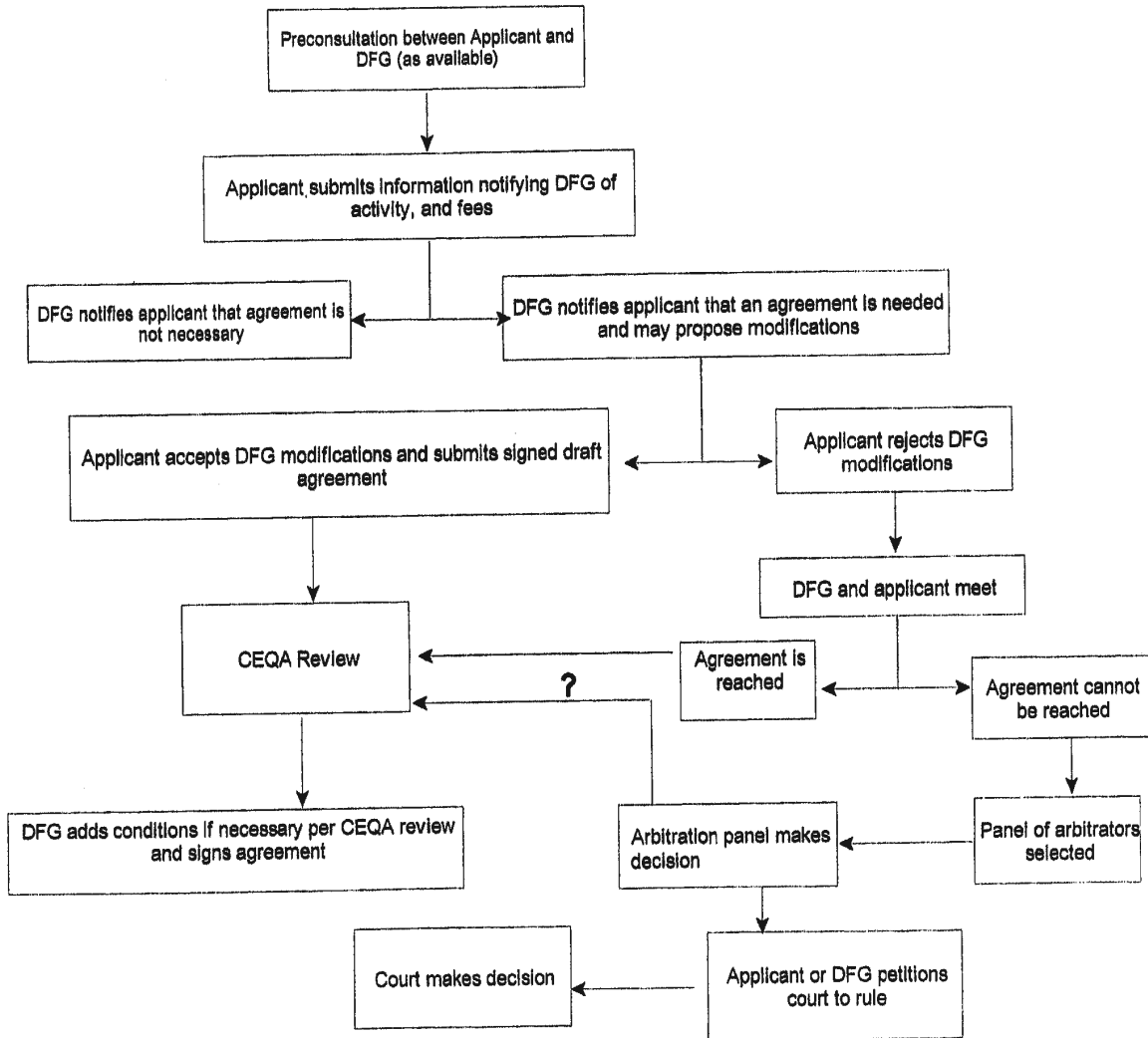


Source: USFWS. (1997). *Handbook of Regulatory Compliance for the Anadromous Fish Restoration Program*. Prepared by Jones & Stokes. Stockton, CA. p. 4-37.

PERMIT FLOW CHARTS

FISH AND GAME CODE SECTION 1601 - STREAMBED ALTERATION AGREEMENT

California Department of Fish and Game



Source: Calif. Dept. of Fish and Game. (2000).
 "Lake & Streambed Alteration Agreement Process." Sacramento. p. 41

A-2 DIRECTORY OF AGENCIES

All state and federal agencies that may be involved in permitting or review of certain road maintenance activities are listed in this directory. Names of individuals are not included as they tend to change too frequently. Contacts for headquarters, regional, and local offices are listed where available.



- **California State Agencies**
- **Federal Agencies**

A-2 DIRECTORY OF AGENCIES

CALIFORNIA STATE AGENCIES

AIR RESOURCES BOARD (ARB)

2020 L St.,
Sacramento, CA 95814
Information: (916) 322-2990; Office of the Ombudsman (916) 323-8711
Regulatory Assistance Section: (916) 322-3984

Basin 1 North Coast Unified Air Quality Management District (AQMD)

2389 Myrtle Ave.
Eureka, CA 95001
(707) 443-3093

Mendocino County Air Quality Management District (AQMD)

306 E. Gobbi St.
Ukiah CA 95482
(707) 463-4354

Siskiyou County Air Pollution Control District (APCD)

525 South Foothill
Yreka, CA 96097
(530) 841-4029

CALIFORNIA ENVIRONMENTAL PROTECTION AGENCY (CAL/EPA)

555 Capitol Mall, Suite 525
Sacramento, CA 95814
(916) 327-1848 (Help Desk) (916) 468-1786 (Permit Assistance Centers)
Website: [//www.calepa.ca.gov/](http://www.calepa.ca.gov/)

COASTAL COMMISSION

45 Fremont St., Suite 2000
San Francisco, CA 94105
(415) 904-5260 FAX (415) 904-5400
Website: [//www.coastal.ca.gov/web](http://www.coastal.ca.gov/web)

North Coast Area Office (Del Norte, Humboldt, and Mendocino counties)

P.O. Box 4908
Eureka CA 95502-4908
(707)445-7833 FAX (707)445-7877

DEPARTMENT OF CONSERVATION

Office of Mine Reclamation
801 K St., MS 09-06

A-2 DIRECTORY OF AGENCIES

Sacramento, CA 95814-3529
(916) 323-9198
Website: [//www.consrv.ca.gov/omr/](http://www.consrv.ca.gov/omr/)

DEPARTMENT OF FISH AND GAME (DFG)

Headquarters	Website: www.dfg.ca.gov
<u>Wildlife Protection Division</u>	<u>Native Anadromous Fish & Watershed Restoration Branch</u>
1416 Ninth St.	1807 – 13 th St., Suite 104
Sacramento, CA 95814	Sacramento, CA 95814
(916) 653-4094	(916) 327-8840 FAX 327-8854

Office of Oil Spill Prevention and Response (OSPR)
P.O. Box 944209, Sacramento CA 94244-2090
(916) 445-9338 Info **24-hour Hotline: (916) 445-0045**
Dr. Kim McCleneghan (916) 322-9210

Region 1 – Northern California- North Coast Region

601 Locust St.
Redding, CA 96001
Information: (530) 225-2300 FAX: (530) 225-2381

619 Second St.
Eureka CA 95501
(707)445-6493 FAX (707)445-6664

Region 3 – Central Coast Region (includes Mendocino County)

P.O. Box 47 (mailing), Yountville, CA 94599
7329 Silverado Trail, Napa CA 94558 (street address)
Information: (707) 944-5500 FAX: (707) 944-5563

DEPT. OF TRANSPORTATION (CALTRANS)

District 1 (North Coast – Del Norte, Humboldt, Mendocino counties)
1656 Union St.
Eureka, CA 95501
(707) 445-6444

District 2 (Northeastern – Siskiyou and Trinity counties)
1657 Riverside Dr.
Redding, CA 96001
(530) 225-3260

A-2 DIRECTORY OF AGENCIES

Environmental Division
650 Howe Ave., Suite 400
Sacramento, CA 95825
(916) 263-3370 Website:

REGIONAL WATER QUALITY CONTROL BOARD (RWQCB)

NORTH COAST REGION

5550 Skylane Blvd., Suite A
Santa Rosa, CA 95403
(707) 576-2220 FAX: (707) 523-0135
Website: [//www.swrcb.ca.gov/rwqcb1/](http://www.swrcb.ca.gov/rwqcb1/)

CENTRAL VALLEY REGION

415 Knollcrest Dr.
Redding, CA 96002
(530) 224-4845
Website: [//www.swrcb.ca.gov/rwqcb5/](http://www.swrcb.ca.gov/rwqcb5/)

RESOURCES AGENCY

1416 Ninth St.,
Sacramento, CA 95814
(916) 653-5656 FAX: (916) 653-8102
Website: [//resources.ca.gov/](http://resources.ca.gov/)

STATE LANDS COMMISSION (SLC)

Land Management Division
100 Howe Ave., Suite 100 South
Sacramento CA 95825
(916) 574-1900 FAX: (916)574-1945
Website: [//www.slc.ca.gov](http://www.slc.ca.gov)

STATE WATER RESOURCES CONTROL BOARD (SWRCB)

Division of Water Quality
Attn: Storm Water Permit Unit
P.O. Box 1977 (901 P St.)
Sacramento, CA 95812-1977
(916) 657-0757 FAX: (916) 657-1011
Website: [//www.swrcb.ca.gov](http://www.swrcb.ca.gov)

A-2 DIRECTORY OF AGENCIES

FEDERAL AGENCIES

NATIONAL MARINE FISHERIES SERVICE (NMFS)

Protected Species Management Division or Habitat Division
777 Sonoma Ave., Room 325
Santa Rosa, CA 95405
(707) 575-6050 FAX (707) 578-3435

Arcata Field Office
1655 Heindon Rd.
Arcata, CA 95521
(707) 822-7201

Southwest Regional Office
501 West Ocean Blvd., #4200
Long Beach, CA 90802-4213
(562) 980-4000 FAX (562) 980-
Website: [//www.swr.ucsd.edu/](http://www.swr.ucsd.edu/)

U.S. ARMY CORPS OF ENGINEERS (COE)

San Francisco District
Regulatory Branch
333 Market St.
San Francisco, CA 94105-2197
North Section (includes Mendocino & Trinity counties) - (415) 977-8439

Eureka Field Office (Del Norte, Humboldt, Siskiyou counties)
P.O. Box 4863
Eureka, CA 95502-4863
(707) 443-0855

Website: [//www.spn.usace.army.mil/regulatory/](http://www.spn.usace.army.mil/regulatory/)

U.S. ENVIRONMENTAL PROTECTION AGENCY (EPA)

Region 9
Water Management Division
75 Hawthorne St.
San Francisco, CA 94105-3901
(415) 744-1305 FAX (415) 744-1078
Website: [//www.epa.gov/ow](http://www.epa.gov/ow)

North Coast Office
1695 Heindon Rd.
Arcata CA 95521
(707) 825-2311

A-2 DIRECTORY OF AGENCIES

U.S. FISH AND WILDLIFE SERVICE (USFWS)

Sacramento Fish & Wildlife Office
Endangered Species / or Ecological Services Divisions
2800 Cottage Way, W-2605
Sacramento, CA 95825
(916) 414-6600 FAX (916) 414-6712

Arcata Fish and Wildlife Office
1655 Heindon Rd.
Arcata, CA 95521
(707) 822-7201
Website: [//www.ccfwo.r1.fws.gov/](http://www.ccfwo.r1.fws.gov/)

U.S. FOREST SERVICE (USFS)

Klamath National Forest
1312 Fairlane
Yreka CA 96097
(530) 842-6131

Mendocino National Forest
825 N. Humboldt Ave.
Willows CA 95988
(530) 934-3316

Shasta-Trinity National Forests
2400 Washington Ave.
Redding CA 96001
(530) 244-2978

Six Rivers National Forest
1330 Bayshore
Eureka CA 95501
(707) 442-1721

California USFS Website: [//www.r5.fs.us](http://www.r5.fs.us)

NATIONAL PARK SERVICE (NPS)

650 Capitol Mall, Suite 8-300
Sacramento, CA 95814
(916) 930-3615

**FEDERAL AGENCIES WITH RESPONSIBILITY FOR
NATIONAL WILD & SCENIC RIVER MANAGEMENT: NORTH COAST RIVERS**

**CALIFORNIA 2a(ii) WSR
River Descriptions/Agency Responsibility**

River	Segment	Mileage	Agency
Eel	NF – Soldier Basin to Forest Boundary (FB Six Rivers National Forest)	15	USFS (SRNF)
	NF – FB to confluence with Main Stem (includes Round Valley Indian Reservation lands)	24	NPS
	MF – Headwaters to FB (Confluence with Black Butte Creek and MF Eel).	18	USFS (MNF)
	MF – Confluence of Black Butte Creek to confluence with Main Stem (includes ½ mile of Round Valley Indian Reservation)	30	BLM
	Main Stem –(legal description) to southern BLM boundary	13	NPS
	Main Stem – South BLM boundary to confluence with Outlet Creek	13	BLM
	Main Stem – Confluence of Outlet Creek to Mouth	120	NPS
	SF – Headwaters (Section 4 Creek) to confluence with Rattlesnake Creek adjacent to Hwy 101 (Leggett)	23	BLM
	SF – Confluence with Rattlesnake Creek to Main Stem	62	NPS
	Van Duzen – Headwaters to confluence with Main Stem (segment end pt.s not clear	40	NPS
Trinity	Main Stem – Lewiston Lake to FB/confluence with NF Trinity R	17	BLM
	Main Stem – East FB to W. FB (Shasta-Trinity NF) (mileage of New River trib not included)	33.2	USFS (STNF)
	Main Stem – East FB to W FB (6 Rivers)	15	USFS (SRNF)
	Main Stem – FB, crossing Yurok land to Hoopa Indian land boundary	1	NPS
	Main Stem – Hoopa Indian land boundary to confluence with Klamath	2	NPS
	New River – Headwaters to confluence with main stem Trinity R	21	USFS (STNF)
	SF – Forest Glen to West FB (Shasta-Trinity NF)	37.2	USFS (STNF)
	SF – East FB (6 Rivers) to confluence with Main Stem of Trinity	19	USFS (SRNF)
	NF Trinity – Headwaters to Main Stem Trinity	15	USFS (STNF)

**CALIFORNIA 2a(ii) WSR
River Descriptions/Agency Responsibility
(Continued)**

River	Segment	Mileage	Agency
Klamath	Iron Gate to FB	12.5	USFS (KNF)
	East FB to Confluence with Dillon Creek– mileage of 2 tribs (Scott and Salmon) not included.	87.1	USFS (KNF)
	Confluence with Dillon Creek to west Forest Boundary of the Klamath N.F.	19.9	USFS (SRNF)
Scott	Scott River from Shackelford Creek to confluence with Klamath River	23.3	USFS (KNF)
Salmon	Main Stem Salmon River from forks of Salmon to the confluence with Nordheimer Creek	4.6	USFS (KNF)
Salmon	Main Stem Salmon River from confluence with Nordheimer Creek to Confluence with Klamath River	14.6	USFS (SRNF)
	SF Salmon R from <1984 wilderness boundary to Forks of Salmon	16.4	USFS (KNF)
	NF Salmon R from < 1984 wilderness boundary to confluence with Salmon R	28.5	USFS (KNF)
Wooley Creek	Wooley Creek from < 1984 wilderness boundary to confluence with Salmon R	7.9	USFS (SRNF)
	Klamath R - East FB to W. FB (Six Rivers National Forest)	20	USFS (SRNF)
	FB to confluence with Trinity R (Hoopa & Yurok Indian land boundaries unclear)	2	NPS
	Confluence with Trinity R to Klamath Glen (Hoopa & Yurok Indian land boundaries unclear)	31	NPS
	Klamath Glenn to mouth (Includes REWD)	4	NPS
Smith	Endpoints unclear – generally from W. FB Note: 296 miles of Smith R were federally designated in 1990, superceding the 2(a)(ii) designation – It continues to be administered by Six Rivers NF.	29	NPS

KNF =Klamath National Forest; MNF = Mendocino National Forest; TNF = Shasta Trinity National Forest ;
SRNF = Six Rivers National Forest; NPS = National Park Service; BLM = Bureau of Land Management

Note: The Six Rivers NF. administrators work on the Ukonom District of the Klamath NF

Note: Do not use this river list as a reference guide for accurate segment mileages. Some of the segments have been measured by informal means and may not reflect the official distances listed in their legislation.